

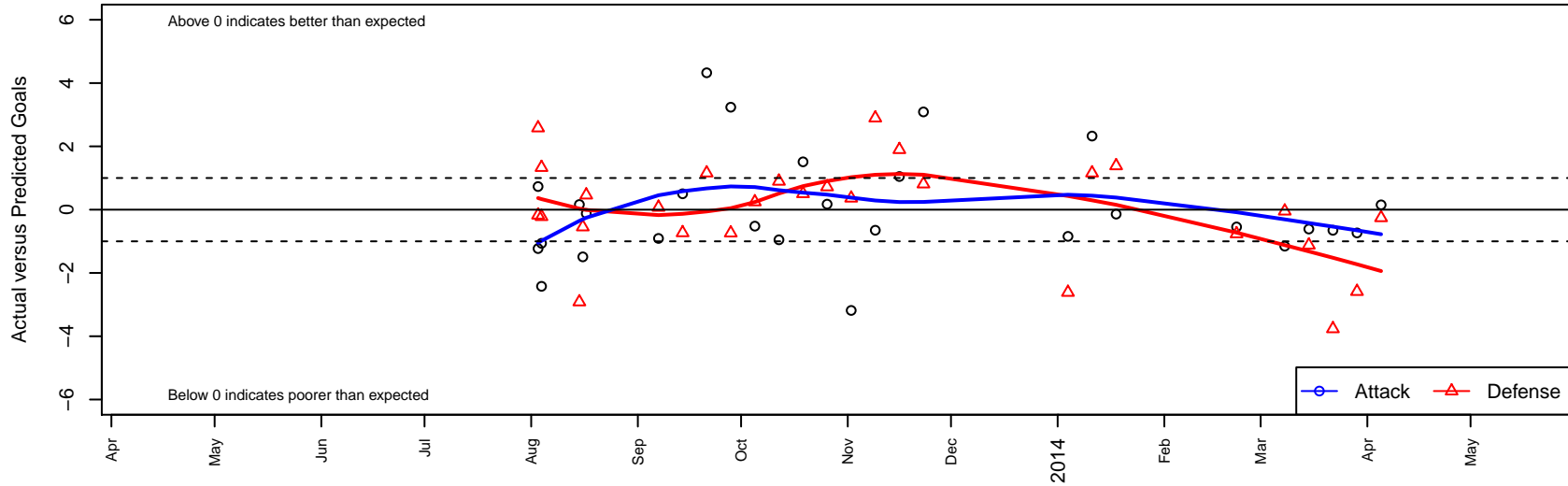
# Newport FC Supernova B02

Newport Youth SC  
 Bellevue, WA  
 B02 total strength=355  
 attack=0.37 defense=0.13  
 fall league = NPSL B11D2, NPSL Spr B12D1  
 alt names used:  
 NEWPORT YOUTH NYSC BU11 (WA)  
 Newport FC BU11 Supernova  
 2013 Newport FC BU11 Supernova

Venues played:  
 SeaTac Cup U11 U11  
 Bigfoot Silver 2 U11  
 NPSL B11D2  
 Founders Cup B02  
 NPSL Spr B12D1



**Newport FC Supernova B02**  
 Dots are actual minus expected GF (blue circles) and GA (red triangles).  
 Blue line is smoothed change in attack strength. Red is smoothed change in defense strength.



	<b>date</b>	<b>home</b>		<b>away</b>		<b>venue</b>	<b>pred.home</b>	<b>pred.away</b>
25638	2014-04-05	Seattle United Shoreline Blue B01	5	Newport FC Supernova B02	1	NPSL Spr B12D1	4.74	0.85
25447	2014-03-29	Newport FC Supernova B02	0	Mercer Island FC Heat B01	8	NPSL Spr B12D1	0.73	5.41
25170	2014-03-22	Newport FC Supernova B02	0	Crossfire Select Taylor B01	9	NPSL Spr B12D1	0.65	5.24
24576	2014-03-15	Marysville Force B02	2	Newport FC Supernova B02	4	NPSL Spr B12D1	0.88	4.61
23901	2014-03-08	Newport FC Supernova B02	1	Snohomish United White B01	1	NPSL Spr B12D1	2.15	0.95
22937	2014-02-22	Seattle United NE Blue B01	7	Newport FC Supernova B02	0	NPSL Spr B12D1	6.24	0.55
21296	2014-01-18	Newport FC Supernova B02	1	Crossfire Select Butler B02	3	Founders Cup B02	1.14	4.39
21065	2014-01-11	Mukilteo Rush B02	0	Newport FC Supernova B02	7	Founders Cup B02	1.16	4.67
20892	2014-01-04	Seattle United NE Blue B02	6	Newport FC Supernova B02	1	Founders Cup B02	3.39	1.84
19034	2013-11-23	Kent United Green B02	3	Newport FC Supernova B02	5	NPSL B11D2	3.81	1.91
18347	2013-11-16	Seattle United W White B02	1	Newport FC Supernova B02	3	NPSL B11D2	2.90	1.95
17583	2013-11-09	Lake Hills Inferno B02	1	Newport FC Supernova B02	2	NPSL B11D2	3.90	2.65
16570	2013-11-02	Newport FC Supernova B02	1	Newport FC Predator B02	0	NPSL B11D2	4.18	0.36
15681	2013-10-26	Newport FC Supernova B02	4	Storm King B02	2	NPSL B11D2	3.83	2.72
14746	2013-10-19	Seattle United S White B02	1	Newport FC Supernova B02	5	NPSL B11D2	1.50	3.49
13694	2013-10-12	Newport FC Supernova B02	1	Seattle United W White B02	2	NPSL B11D2	1.95	2.90
12653	2013-10-05	Newport FC Supernova B02	3	Impact FC Black B02	2	NPSL B11D2	3.52	2.25
11753	2013-09-28	Mercer Island FC Strikers B02	2	Newport FC Supernova B02	6	NPSL B11D2	1.26	2.76
10779	2013-09-21	Newport FC Supernova B02	9	Mukilteo Rush B02	0	NPSL B11D2	4.67	1.16
9805	2013-09-14	Newport FC Supernova B02	2	NSC Fuego B02	4	NPSL B11D2	1.50	3.27
8862	2013-09-07	NSC Barca B02	3	Newport FC Supernova B02	1	NPSL B11D2	3.07	1.91
6933	2013-08-17	Eastside FC Grey B02	2	Newport FC Supernova B02	3	Bigfoot Silver 2 U11	2.46	3.12
6728	2013-08-16	Newport FC Supernova B02	3	Seattle United Copa B04	4	Bigfoot Silver 2 U11	4.49	3.45
6661	2013-08-15	Newport FC Supernova B02	2	MVP Rapids White B02	6	Bigfoot Silver 2 U11	1.84	3.08
5645	2013-08-04	Slammers Orange B02	3	Newport FC Supernova B02	0	SeaTac Cup U11 U11	4.33	1.06
5654	2013-08-04	Eastside FC Black B03	2	Newport FC Supernova B02	3	SeaTac Cup U11 U11	1.78	5.42
5348	2013-08-03	Newport FC Supernova B02	2	Highline Premier -Unk B02	2	SeaTac Cup U11 U11	1.27	1.83
5350	2013-08-03	Newport FC Supernova B02	1	WPFC Fury Black B03	0	SeaTac Cup U11 U11	2.23	2.58